



OmniFab 2019

Automation, transparency and availability in production

OmniFab 2019 is the software suite that offers you, as a company in the field of flame cutting and cutting technology, a tailor-made solution for your order-related production. It integrates Messer engineering technology into your business processes.

OmniFab 2019 is a modular software suite that grows with your requirements. You can combine the modules in such a way that they are precisely tailored to your particular situation.

Automates your processes

All systems work „hand-in-hand“ across the entire value chain of the company.

Order data from your ERP system is available in your CAD/CAM software. Results from production run seamlessly back into your ERP system including order data.

Makes results transparent

Pre-calculated production times and material usage are checked with real data and incorporated into the calculation parameters. Data on machine utilization and downtimes are recorded and evaluated.

Increases the availability of your machines

From the machine data, you can generate plannable maintenance intervals and uncover potential for optimization.

The result: competitive advantage through increased production efficiency.

OPTION ERP-CONNECT

OmniFab 2019 automatically takes the order data from your ERP system and makes it available to your production-planning department.

Order items, parts, plates and other relevant customer data are automatically delivered where they are needed.

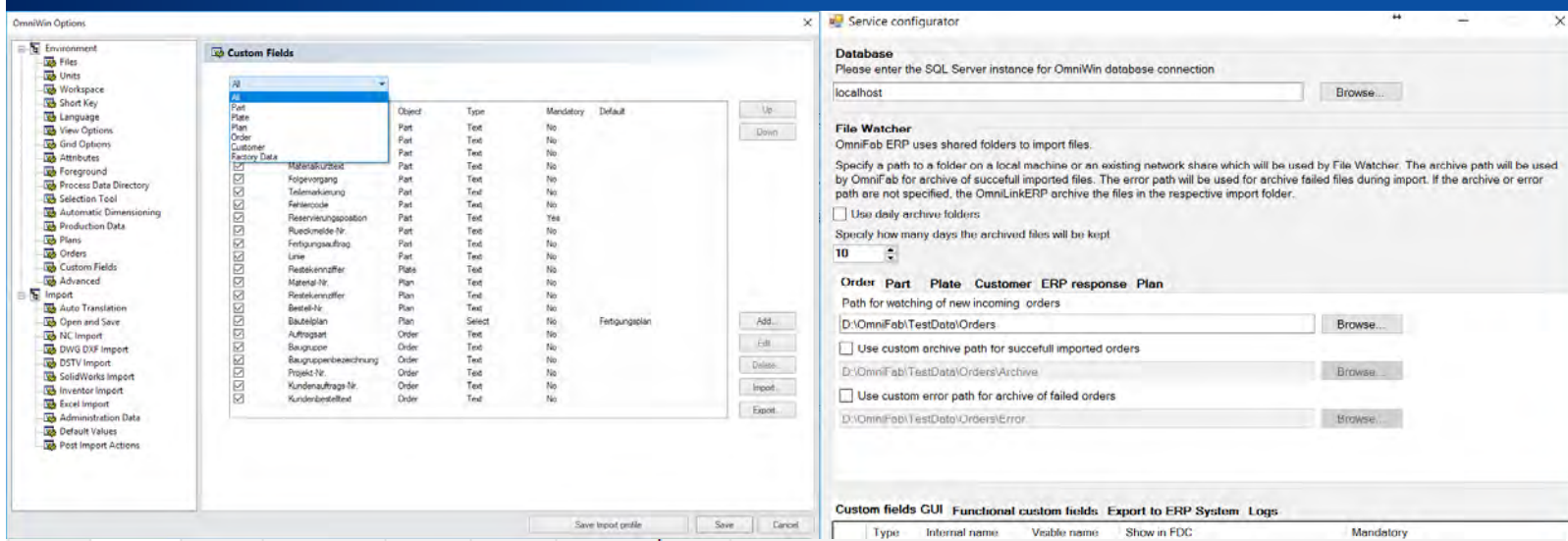
Nesting plans with real production data can be returned to the ERP system.

Each installation is adapted exactly to your needs.

When machines, process-oriented software and ERP systems work „hand-in-hand“, all processes run smoothly along the entire value chain. From the preparation of the quotation to the post-calculation, from the design of the components to the creation of nesting plans, the transfer of the plans to the machine and finally the cutting of the parts. Production results are then available in the ERP system.

Option ERP – Connect:

- Automatic data exchange between ERP system and OmniWin via XML
- Orders
- Customers
- Plates
- Nesting plans
- Configurable through customer-specific fields
- Interface monitoring
- Expandable with FDC option
- Requires OmniWin Edition Enterprise



Name: Message: Last refresh: 06/09/2018 11:58:42

From: All Use auto refresh

To: Only errors No errors

Nr.	File name	Created On	Name
1	D:\OmniFab\TestData\Parts\Response\12layers(2).xml	06/09/2018 08:45	12layers
2	D:\OmniFab\TestData\Parts\Response\12layers(1).xml	06/09/2018 08:32	12layers
3	D:\OmniFab\TestData\Parts\Response\12layers.xml	06/09/2018 08:30	12layers
4	D:\OmniFab\TestData\Parts\Response\Part448.xml	04/09/2018 15:21	ERP-PART-{F8CCCE45-0510-47FA-8305-914916DAC
5	D:\OmniFab\TestData\Parts\Response\Part448.xml	04/09/2018 15:21	ERP-PART-{A3189BD5-0002-4318-A575-E4A6268A31
6	D:\OmniFab\TestData\Parts\Response\Part448.xml	04/09/2018 15:21	ERP-PART-{7ACA7AA8-3D94-4478-B9CA-85DC0990F
7	D:\OmniFab\TestData\Parts\Response\Part448.xml	04/09/2018 15:21	ERP-PART-{A6A7CB80-8EA5-47AE-BBF8-275C5BA7
8	D:\OmniFab\TestData\Parts\Response\Part448.xml	04/09/2018 15:21	ERP-PART-{0C21BDAB-5B5A-431A-88F4-CB41801F
9	D:\OmniFab\TestData\Parts\Response\Part448.xml	04/09/2018 15:21	ERP-PART-{DE157E54-4C2B-432D-BA84-A8DA6DAF
10	D:\OmniFab\TestData\Parts\Response\Part448.xml	04/09/2018 15:21	ERP-PART-{0005C087-1808-410D-01D9-4805E5D82

Option Factory Data Capture

- Capture of start and end
- Recording of break times
- Actual material and area used
- Actually manufactured parts and scrap
- Configurable through customer-specific fields
- Recording of working time
- To combine with Option ERP-Connect
- Correcting FDC Messages
- Analysis of FDC messages
- Requires OmniWin Edition Enterprise

Nesting Plan *

Employee *

Material-Nr.

Bestell-Nr.

Bauteilplan

Additional usage length (mm) Back

Additional usage width (mm)

Start **Pause** **Finish**

Last committed Status
Started by TG

Plan name: P000023

Employee:

Additional usage length:

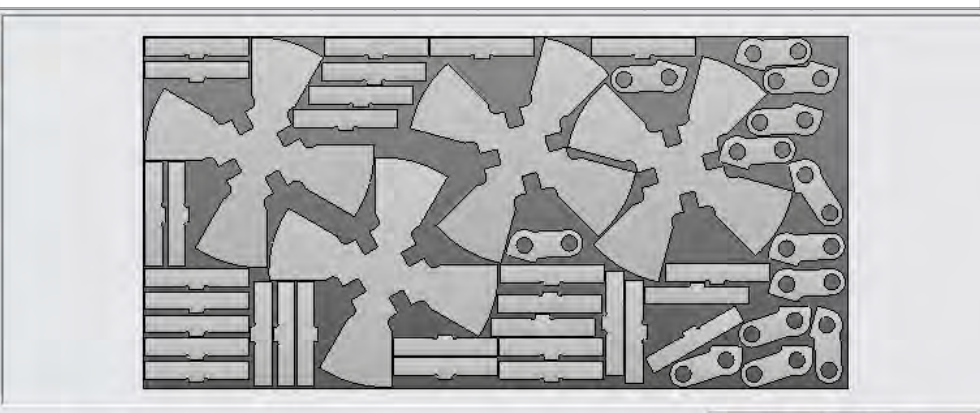
Additional usage width:

Pre-estimated production time:

Working time:

Break time:

Status:



Thumbnail	Order number	Item no. with name	Quantity	Nested on plan	Cut	Rejections
	O10100	1 : 1014		30	30	30
	O10101	1 : 1004		13	13	13
	O10101	2 : 1051		4	4	4

OPTION FACTORY DATA CAPTURE

With the option FDC, you record the working times on your cutting machines, the number of finished parts, the scrap and the material actually used.

The FDC messages can be checked and corrected at any workstation.

OmniFab 2019 Option FDC generates complete, up-to-date and reliable data for your production control. Transparency and traceability are the results.

You receive your own FDC system for your flame cutting machines with which you can control and monitor all cutting jobs in operation. Planning and calculation efforts are significantly reduced.

OPTION MACHINE INSIGHT

OmniFab 2019 Option Machine Insight provides you with important information about your cutting machines in real time during operation.

Real-time **machine monitoring** provides you with the status and data of each connected machine. You see

- All important information about the program that is currently cut on the machine,
- The shift in which you are currently working,
- A graphical representation of the workload in the last eight hours, and
- The number and type of faults that have occurred on the machine in the last 24 hours.

This enables you to detect faults more quickly and initiate measures to eliminate them at an early stage.

Graphical illustrations show the **machine utilization** and reasons for downtime for

- Definable periods of time (days, weeks and months),
- The working time,
- The idle time and
- The error time.

The times used for the various processes (cutting, positioning, piercing and preheating,) are also clearly displayed. Times and work steps can be displayed per shift.

You get an insight into the utilization of the machines, the downtimes and reasons and recognize the accumulation of errors at certain times.

MESSER
Cutting Systems

Welcome to OmniFab Machine Insight

Start exploring one of the solutions provided by us for increasing your productivity, collaborative maintenance and transparency in the production.

Monitoring

Providing real-time insight into the current machine status and proactively notify in case of...

Machine Utilization

Provide insight into the overall cutting machine effectiveness by suitable reports. Accumulat...

Job Reports

Provide information about actual vs. planned cutting times on a regular basis in order to...

Reporting

This module provides you a set of reports after certain time intervals like shifts, working da...

Option Machine Insight

- Machine monitoring
- Machine utilization
- Reports and statistics



Monitoring App



WORKING



IDLE

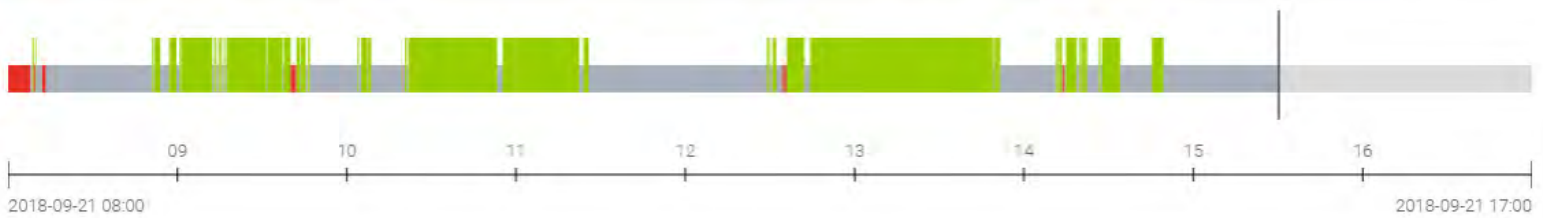


ERRORS

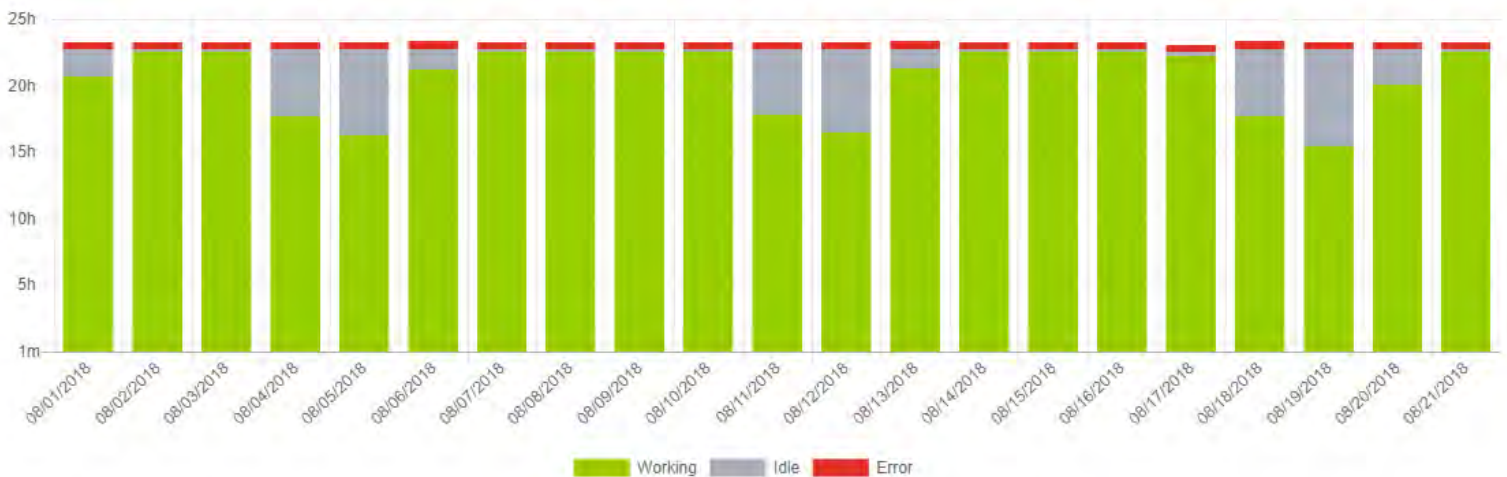
Program Name: 6020--T1.5-DB--1.TXT



IDLE - Automatic

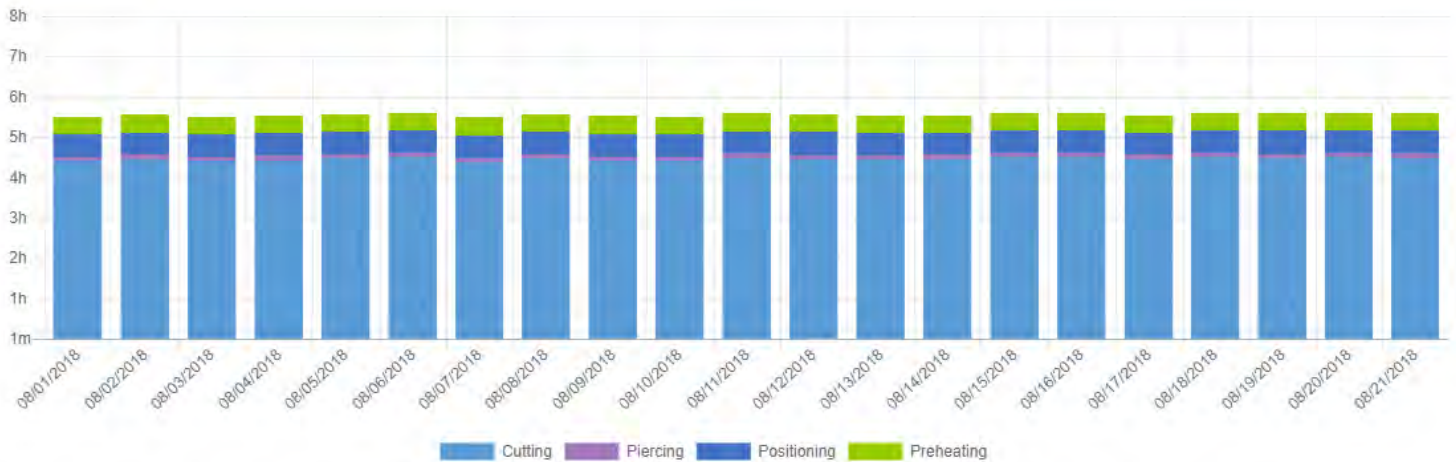


Machine Utilization App





Machine Utilization App



Job Reports App

Machine name	Part program name	Start time	End time	Planned time (h)	Actual time (h)
US - MMX6073 Messer	2018-09-13-08:07:06.089	2018-09-12 15:16:05	2018-09-13 13:07:09	21:51:04	21:51:04
US - MMX6073 Messer	2018-09-12-10:16:03.321	2018-09-12 15:10:31	2018-09-12 15:16:05	00:05:34	00:05:34
US - MMX6073 Messer	2018-09-11-12:40:11.855	2018-09-11 14:53:50	2018-09-12 15:10:31	24:16:41	24:16:41



Reports

Machines	Reports		
Machine Name	Current Working Day	Last Working Day	Last Working Week
A3	A S1	A S1	WORKING
	B S2	B S2	WORKING WEEK
		C S1	

OPTION MACHINE INSIGHT

The **job reports** show you when a job was started, when it was stopped, how much time was scheduled for the job, and how much time was actually needed for the job.

By recording the actual times, you gain better data for planning production. Jobs with the largest deviations between planned and required time are clearly identified and can be optimized.

Reports are available as PDF files based on working days or weeks. Thanks to the compact presentation of the reports, you can also easily keep track of a large number of machines. Additional functions make it easier to recognize patterns in the event of anomalies in the data and initiate necessary measures earlier and more purposefully.

The reports provide you with an overview of

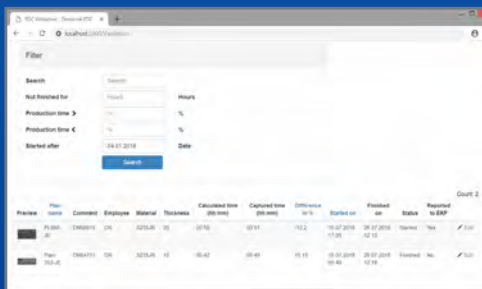
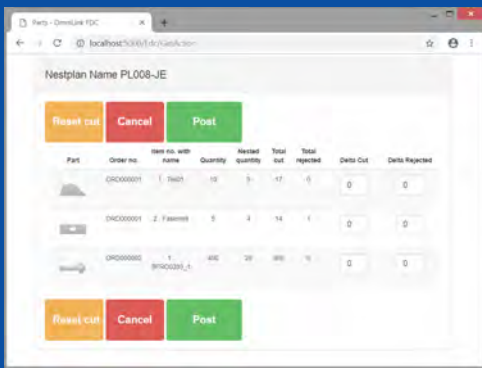
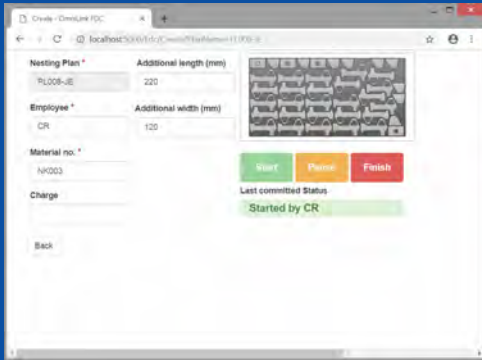
- Machine utilization,
- Downtimes and reasons,
- Process times,
- Frequency of error categories, and
- Errors responsible for the highest downtimes.

ADDITIONAL PROJECT OPTIONS

NESTING PLAN OVERVIEW

The nesting plan overview in the browser allows you to keep a clear overview of your own production at the cutting machines. By comparing precalculated and reported production times, you can successfully optimize the production.

You recognize deviations from the planning and can use the filter functions to keep track of exactly what is important to you. In the option Factory Data Capture together with OmniWin, the nesting plan overview provides all necessary data.





SYSTEM REQUIREMENTS AND FEATURES

Hardware Requirements for installing OmniFab 2019

- Microsoft Windows 2008 RS SP1 or higher (32/64-bit)
- USB port for a local software protection dongle or network access to a license server
- Microsoft .NET Framework 4.7.2
- Microsoft .NET Core 2.1
- 4 GB hard disk space
- 4-8 GB of RAM

Prerequisite for option FDC on the controller

- Windows 7 or higher
- Use of a Bluetooth scanner optional
- Network connection with cutting machines

Prerequisite Option Machine Insight

- 4-8 GB main memory, depending on expansion level
- 120 GB hard disk space
- Operating system included
- Network connection to the cutting machines and license servers





Messer Cutting Systems GmbH

Otto-Hahn-Str. 2-4
64823 Groß-Umstadt
T +49 6078 787-833
F +49 6078 787-970
info@messer-cutting.com
www.messer-cs.com